

The Fly of the Month

Pisgah Chapter Trout Unlimited



April 2009

Celebrating 40 Years

February 2007 - April 2009

Page	Fly Name	Date
3	Adams Dry Fly	Feb-07
4	Stonefly Nymph	Mar-07
5	A P Nymph	Apr-07
6	Stimulator	May-07
7	Cased caddis	Jul-07
8	Chernobyl Ant	Aug-07
9	Hare's Ear Nymph	Sep-07
10	Antron Emerger	Oct-07
11	Breadcrust Nymph	Nov-07
12	Byron's Soft Hackle	Feb-08
13	Leadwing Coachman	Apr-08
14	Kevin's Stonefly	May-08
15	Split Back Nymph	Jul-08
16	The Ant	Aug-08
17	Parmachene Belle	Sep-08
18	Bead Head Midge	Oct-08
19	Alder Fly	Nov-08
20	Griffiths Gnat	Jan-09
21-22	"Little Moth"	Feb-09
23-24	Little Yellow Flies	Feb-09
25	Black Parachute	Mar-09
26	Whitlock's Near Nuff Sculpin	Apr-09



Adams Dry Fly Pattern Feb 2007

Dale Klug

If ever there was a dry fly that needed no introduction, it is the Adams. This American fly pattern (designed by Len Halladay of Michigan in 1922 at the request of his close friend Charles Adams) was believed to have originally been a down wing pattern that more closely imitated a caddis. Regardless of its origins, the Adams is considered by many anglers to be the best dry fly pattern ever conceived. Probably the first fly I memorized the name of, the Adams has always had a home in my fly box.

Hook: Tiemco 100 size #10-#20 (or any standard dry fly hook)

Thread: Grey or black 8/0

Wing: Grizzly hackle tips (hen)

Tail: Hackle fibers~grizzly/brown/grizzly

Abdomen: Muskrat underfur

Hackle: Grizzly and Brown (rooster/neck)



Select and align 2 grizzly hen hackle tips so that they flair away from one another. Measure them against the hook. The wings, when finished, should be approx. the length of the hook shank. Make 3-4 tight wraps of thread to tie them in. It's a good idea to make the first 1 or 2 wraps under light thread tension so that the feathers don't twist.

Trim the butt ends of the hackle tips and begin to wrap your thread back towards the bend in the hook. Select some spade hackle (the hackle found at the edges of the rooster neck with long, stiff fibers) from both the grizzly and brown. Tie in a small bunch of grizzly, followed by a small bunch of brown, and another small bunch of grizzly.

Less is more, it's easy to get the tail too bulky!

Dub a tapered abdomen of muskrat under-fur, stopping before you get to the tie in point of the hackle tip wings. Pinch the hackle tips together and pull them back.

Make 3-4 tight wraps of thread in front of the hackle tips to keep them upright. Trim the hackle barbs that got squashed in the process!

Behind the wing (and over that spot you left bare while dubbing the abdomen) tie in a prepared brown hackle, and a grizzly one over it.

The second hackle you tied on (the one on top) is the first one you wind forward~the grizzly. Make 1 or 2 wraps behind the wing, 2-3 in front of it. Try to keep the space between the wraps uniform. Tie it off.

Next, wind the brown hackle forward. Look closely at the hackle stem where it contacts the hook shank and try to position the wraps between the grizzly hackle. Tie off, trim off the remaining hackle. Small thread head, a bit of head cement...you're done!

Detailed illustrations of this recipe can be found at: <http://flies.hipwader.com/2005/adams-dry-fly>.

Stonefly Nymph

March 2007

Steve Herring

With a paucity of top water action the winter is the nymph fisherman's domain. Eschewing tiny midge imitations, patterns mimicking the small black stonefly are effective and a lot easier to manage with cold fingers. In recent years, soft hackle flies have had a well-deserved resurgence in popularity. They are simple to tie and often take fish that refuse other patterns. I have enjoyed success with top water and wet fly versions and look forward to trying this variation of the stonefly nymph.

Hook: Size 16 or 18 standard or 1x long nymph hook

Thread: 6/0 or 8/0 black

Body: Purple midge tubing or Pearsall's silk thread.

Thorax: Peacock herl

Rib: Counter wrapped fine gold or silver wire

Hackle: Starling feather of size to reach the hook point or slightly longer

Variation: A small black tungsten bead can be used as the thorax

Technique: Tie in the thread one eye length behind the hook eye. Wrap back to the hook bend. Tie in the fine wire. Tie in the body material. Wrap body material to the back of the thorax (about $\frac{3}{4}$ up the hook shaft) and tie off. Follow with counter wrapped wire. Tie in and wrap peacock herl as the thorax using a thread rope or over-wrap as support. Tie in hackle and wrap a sparse 1 to 1 $\frac{1}{2}$ turns. Using the part of the feather that has a small amount of webbing at the base should facilitate an undulating motion in the water. Tie off and finish the head. Dress warmly and go fish!



A. P. Nymph

Preston Pierce

April 2007

The A.P. Nymph's name is derived from either its creator's name, "Andre Puyans," who founded the first Trout Unlimited council and chapter, or "All Purpose," to describe its many uses. Puyan designed this fly to be tied in various shapes and sizes and with several different types and colors of dubbing to mimic a huge variety of different underwater insects. In creating the fly, Puyan reasoned that, although many nymphs are abundant in the stream, only certain types are available to trout-i.e., the mobile types that swim and crawl within the trout's environment. He felt that muskrat and beaver (rather than hare's mask) were ideal at creating the proper texture to mimic gills along the abdomen and filaments along the abdomen and thorax of the most available nymphs. My dad and I have had good success on freestone streams with the A. P. Muskrat, i.e., tied with gray Muskrat dubbing. This success is probably attributable to its pronounced legs that clearly distinguish it-from the trout's perspective-from inedible drift.

- Hook: any nymph hook that achieves the desired size and shape (12-18)
- Thread: 6/0 or 8/0 in gray, brown, black, or olive
- Rib: fine gold or copper wire
- Abdomen: Muskrat or Beaver Dubbing (or Hare's Mask) in gray, brown, black, or olive
- Wingcase: Dark Moose Hair
- Tail: Dark Moose Hair
- Legs: Dark Moose Hair
- Head: same as abdomen
- Thorax: same as abdomen



1. If you plan to add lead, add it now. Comb, stack, and measure a small batch of moose hair. Tie in the moose hair at the hook bend for a tail. Take a single turn of thread under the hair tips to tilt them forward.
2. Lift the hair's butts, advance thread to just past midshank, lower and tie in the butts at midshank. Trim away some of the tail fibers leaving only four to six.
3. Tie in copper wire midshank, and then spiral the thread down the shank and wire to the bend. Dub a tapered abdomen of muskrat underfur to just past midshank. Wind the wire forward in four to six ribs. Secure the wire's end under thread, and trim the wire.
4. Pull the hairs' butts firmly back and dub the thorax. If you added lead, dub lightly; if not, dub heavily to create a full thorax. Pull the hairs' butts forward and secure them just behind the eye.
5. Draw four to six hair butts back along one side, and then secure them there with thread turns to create legs. Do the same on the other side.
6. Trim closely the remaining hair butts.
7. Dub over the cut butts with muskrat underfur, build a thread head, and add a whip finish, trim the thread. Add head cement to the thread head.

My favorite way to fish the A. P. Nymph is to tie it behind a lead-eyed Woolly bugger with about 12 to 18 inches of tippet and drop it into a brisk run.

Stimulator

May 2007

MATERIALS

Hook: 2X OR 3X Long Dry Fly, TMC 200R, Mustad 79580, Size 6-16

Thread: Orange, 3/0 or 6/0

Tail: Elk (Deer Body Hair is called for by some tyers)

Abdomen: Yellow/orange dubbing

Rib: Brown or grizzly hackle, palmer style, smaller than hook size

Thorax: Orange Dubbing

Hackle: Grizzly over thorax, dry fly style

Wing: Elk



TYING INSTRUCTIONS

1. Tie in clump of elk hair for the tail, with a length extending beyond the bend of the hook about 1 ½ times the hook gape. Some tiers tie the butt ends of the elk hair on the hook shank as an underbody.
2. Tie in brown or grizzly hackle for palmer rib and dub a tapered yellow-orange body forward to about 2/3rds the length of the shank.
3. Wrap the hackle forward, palmer style over the abdomen. Tie off and tie in the wing of elk hair such that the end of the wing is even with the bend of the hook.
4. Tie in second hackle and dub the thorax forward to a few mm behind the hook eye.
5. Wrap the hackle forward, dry fly style and tie off.
6. Whip finish and go fishing.

CASED CADDIS July 2007



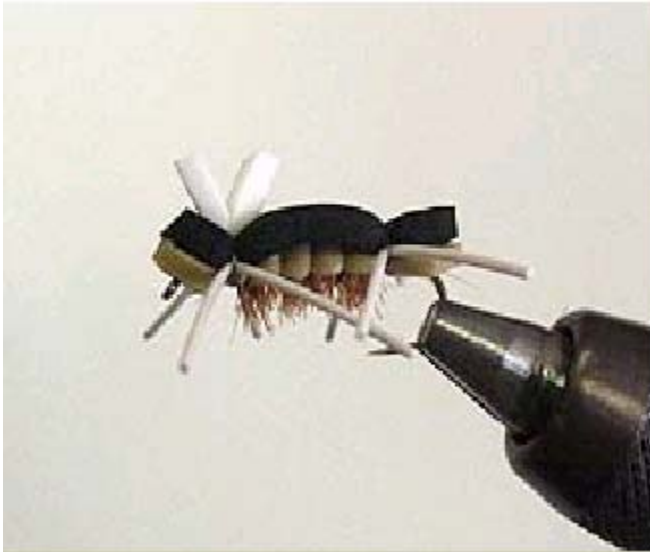
It's about that time of the year when you turn over a rock on the Davidson or the N. Mills that you see many cased caddis larvae drifting in the river. The Cased Caddis nymph is sometimes called "stick bait". It is very effective when fished along the bottom where it imitates a caddis caught in the current or simply drifting. It is a pretty good imitation of the *Brachycentrus americanus*, the Elk Hair Caddis-Brown.

Recipe: Hook: 6x long, size 8-12
Thread: Black
Underbody: Lead wire
Case: Peacock herl

Hackle: brown, clipped short
Rib: Copper wire, counter-wrapped
Body: A band of cream dubbing
Head: Black dubbing

Chernobyl Ant

August 2007



Materials List:

TMC 5212 #8

6/0 or 8/0 thread

Brown hackle, neck or saddle

Round rubber legs (white)

Fly Foam (black, tan & white)

For detailed tying instructions visit the following web site:

http://www.creelflyfishing.com/tennessee_trout_flies.htm

Hare's Ear Nymph September 2007



Head: 3/32" brass bead

Thread: 8/0 brown

Tail: Hare's ear guard hairs

Abdomen: Hare's ear underfur

Thorax: Hare's ear underfur and guard hairs, dubbed thick

Wingcase: Mottled turkey quill section

Hook: Mustad 3906 12-16

Rib: Oval gold tinsel

Tie as any hare's ear nymph - secure the bead with dubbed thread wraps behind it before adding the dubbed body, and reverse wrap the ribbing for added strength. Pick out some of the guard hairs from the thorax to give it that 'buggy' appearance and add some head cement to the wing case to add durability.

Antron Emerger

October 2007

Here is an interesting pattern that I recently came across.



Legs: 1 wrap of small partridge breast feather

Tail: Cream antron

Head: Hare's ear

Body: Hare's ear underbody dubbing covered by rust antron, pillowed to trap air

Hook: Std nymph size 12-16

Thread: Tan 8/0

Jack A. Frisch

Breadcrust Nymph

Nov/Dec 2007



I was first introduced to the *Breadcrust* while fishing for brown trout on the Arkansas River in Buena Vista, Colorado. Subsequently, I learned that it is an old “Eastern” nymph pattern. The traditional tie uses brown hackle stem (stripped and soaked in a diluted glycerin solution to make it more supple) for the rib. I substitute brown embroidery floss for the rib. I also tie it with a beadhead. I generally tie it on a wet fly hook or a nymph hook in sizes 14 and 16. The thread is orange or brown. The body is rusty orange dubbing. The rib is a single strand of brown embroidery floss. The collar is soft grizzly hackle. The beadhead should be proportioned to the size of the hook.

Jack Frisch

The Pattern for Byron's Soft Hackle February 2008



Hook: 14-18 (Standard Dry Fly such as Tiemco 100)

Thread: 8/0 (Tan in Color)

Body: Antron Dubbing (Tan in Color)

Ribbing: Fine, flat gold tinsel

Hackle: Natural Partridge

Tail: None

The Leadwing Coachman

April 2008

by Jack Frisch



This is a classic wet fly that has endured the test of time.

Hook	Mustad 3906 or equivalent
Size	10-14
Thread	Black- 6/0
Tag	Flat Gold Tinsel or Mylar
Body	Peacock Herl
Hackle	Dark Ginger Hen-Collar Style
Wing	Mallard Wing Quill Segments

Kevin's Stonefly May 2008

Jim Hoskinson

VIDEO



Hook DAI-RIKI #710 or Mustad 9672
Size 8-12
Thread Black 6/0
Lead Wire .015"wrapped over most of the hook
Tail Black Rubber Legs
Body 5-6 strands peacock herl + black wire
Shell back Turkey Tail
Abdomen White Chenille
Hackle Grizzly - palmered (trimmed on top)
Wing case Turkey tail
Front Legs Black Rubber Legs

I fish this fly in those deep pools that are sure to hold big trout. You want to fish this fly on the bottom. Yes, you'll lose some to snags so you'll need several. As the old saying goes: "If you ain't getting snags, you ain't catching fish"

Split Back Nymph July 2008

Jim Hoskinson



Background: I have fished both the Watagua and South Holston Rivers recently with two different guide services. The "Go To Fly" for both was the split back nymph shown above. It is thought to resemble the sulfur nymph.

HOOK: 16-20 DAIICHI 1710 2X long, 1X heavy

TAIL: Wood Duck Fibers

THREAD: Camel Uni-Thread

BODY: Camel Uni-Thread 6/0 for size 16, 8/0 for 18 & 20

RIB: Black Thread or Wire or none

WINGCASE: Yellow Razor Foam with a brown turkey biot on each side.

LEGS: Wood Duck same as tail

INSTRUCTIONS:

Pinch the barb!

The tying is straight-forward until get to the wing case.

Attach a very narrow strip of yellow razor foam and a turkey biot to each side of the foam. Tie down the razor foam and then border both sides with turkey biots.

Good Luck....I gave up on the biots after 5 tries. The biots make a very pretty fly - I don't think the fish will notice if you leave off the biots. The yellow seems to trigger the trout.

The Ant August 2008



There are three basic ant ties: (1) the so-called ant wet fly, that is fished sub-surface, particularly effective in fast and/or deep water, (2) the “suspended” ant, with a fur body that is somewhat more buoyant than the wet ant so that the fly rides within the surface film... definitely not on top, and (3) the flying ant, to imitate the fall hatches that excite even the avid mayfly angler, which rides low in the water.

MATERIALS

Hook: Mustad 94840 or 94833 sizes 8-24

Thread: 6/0 black

Thorax: (1) wet ant: Wrapped and lacquered thread, (2) suspended ant: Dubbed fur, (3) winged ant: dubbed fur or poly. Note that deer hair (folded back and tied down) has also been used in ant patterns by Chauncy Lively and Paul Calcaterra, with legs from deer hair fibers that have been picked out.

Head: Same segment as thorax. Some tiers recommend creating a separate segment for the head (yielding two segments in front of the waist) in flies size 14 or larger.

Abdomen (also called the gaster): Same material as the thorax, but segmented from the thorax by a very thin waist.

Hackle: Dry fly hackle to match body color

Wings: (Only for flying ant) Hackle tips or a bunch of white poly, tied behind the thorax and pointing toward the rear.

TYING STEPS

1. Create the abdomen (gaster) with layers of tying thread (for the wet ant) or dubbed fur or poly (for the suspended or winged ant). With the wet ant abdomen, apply tying cement until the abdomen is smooth and shiny.

2. Tie in the wings (for the flying ant) and hackle (sparse dry fly style) for all three patterns.

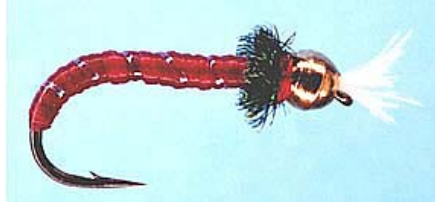
Parmachene Belle September 2008



A wet fly that is an historic pattern developed in the 1800's, in Maine. Originally tied to imitate the fin of the of the brook trout. Looking at the pattern from modern eyes, it has excellent coloration, movement, and attraction

- Hook: Mustad 3906 or equivalent. Size 8-12
- Thread: Black 6/0 pre-waxed.
- Tail: Red & White Hackle Fibers mixed.
- Rib: Flat Gold Tinsel or Mylar.
- Body: Yellow Fur or Floss.
- Hackle: Red & White mixed-collar style.
- Wuing: Red & White Duck Quill Segements married

Bead Head Midge October 2008



Materials

Hook: R30 #12-14

Bead: Brass, 3/32-inch

Thread: 8/0 Red

Gills: CDC puff, white

Rib: Tinsel, very fine silver or Crystal Flash, pearlescent

Body: Superfloss, red

Collar: Peacock herl

CDC, Cul de Canard, feathers come from around the preen gland on a duck. A duck uses oil from the gland to dress and waterproof all of its feathers. Such waterproofing makes CDC a natural choice for floating patterns. However, the fibers have a translucency and lifelike movement in water that makes CDC a good choice for wet flies also. Incidentally, never use a floatant on CDC dry flies just dry them with a cloth. Not all fly shops carry the CDC puffs, so look around or have the shop folks order them for you.

Tying Steps

1. If you want to remove the barb, do it before you start tying the fly.
2. Put hook in vise point up. Pick up bead, and slide it onto hook with the larger opening toward the eye.
3. Turn the hook over, but keep the bead near the back of the hook.
4. Attach thread at the eye. Loosely tie a CDC puff on top of hook with tips sticking out over eye. Pull the puff back until less than 1/8-inch of the feather is exposed. Tighten thread, whip finish, cut thread and trim back of CDC as closely as possible. Apply a little head cement to let the bead slid. Move bead forward over the thread and puff. Reattach thread behind the bead.

5. First attach rib on top of hook behind bead. Then tie Superfloss on top of rib. Hold both materials as thread is wrapped rearward. Try to keep tinsel on the bottom, and both materials on top of hook. Continue wrapping around the bend a little. Wrap thread forward in close wraps.
6. Stretch the Superfloss at start of wrapping forward, ease tension as you move forward and really ease up on tension behind bead. Tie Superfloss tightly.
7. Spiral rib forward and secure tightly behind bead. The Crystal flash can be twisted to prevent it from going flat.
8. Attach a peacock herl behind bead, take three wraps of peacock herl, secure and trim excess.
9. Place two whip finishes between peacock herl collar and bead. Cut thread

The Alder fly Nov/Dec 2008

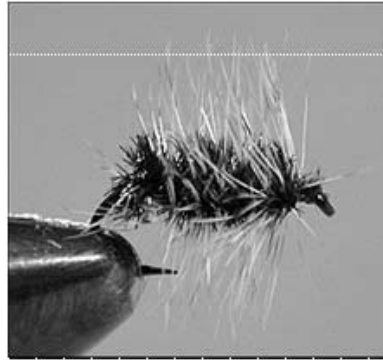


The Alder wet fly is another classic wet fly pattern. It imitates the Alder Fly (*Sialis lutaria*), a variant of the Caddis fly. The recipe for the fly is quite simple.

- Hook: Mustad 3906 or equivalent
- Size: 10-14
- Thread: Black 6/0
- Tag: Flat Gold Tinsel or Mylar
- Body: Peacock Herl
- Hackle: Black or Brown Hen-Collar Style
- Wing: Oak Turkey or Speckled Hen Quill Segment

Jack Frisch

Griffiths Gnat January 2009



Hook: Dry Fly-Sizes 18-22
Thread: Black
Rib: Fine Copper wire
Body: Peacock Herl
Hackle: Grizzly, palmered

Uses

A simple tie, the Griffiths Gnat imitates an adult midge and is useful during midge hatches. While trout feed primarily on pupa during a midge hatch, they are often receptive to a well-presented Griffiths.

Comments:

The winter months are a good time to fish midge patterns here in the Mountains.

“Little Moth” February 2009

Fishing below the Davidson River Fish hatchery can be somewhat frustrating at times. This is especially true when trout are rising everywhere and sucking down invisible morsels. It's like fishing in a trout raceway with very selective large fish. Small midge patterns and emergers are often used, but I like to fish dry flies when ever possible. After sieving some tiny grey stone and white moth flies, I tied some small size 28 flies. I didn't have any hackles that small so I improvised. Using the fluff from the base of a hackle I dubbed it on to the hook. I then trimmed the excess fluff and tied a fine clipping of feather for the wing. I finished it off by adding a small amount of head cement and trimming the wing. Add some Aquel or Gink and it floats great.

With the first cast, I caught a nice brown trout. Following dozens of more strikes with trout even rolling out of the water after the fly, I was not able to connect with another fish. Apparently I was pulling the fly out of the fish's mouth too quickly, and the small hook gap was not connecting. Next I tied some of the same flies on size 22 scud/pupa hooks. I still had the same problem hooking fish until I stopped striking and just gently lifted my rod tip. This seemed to do the trick.

Materials:

Hook: Dai-Riki #135 size 22 scud/pupa hook

Feather: white or grey hackle fluff

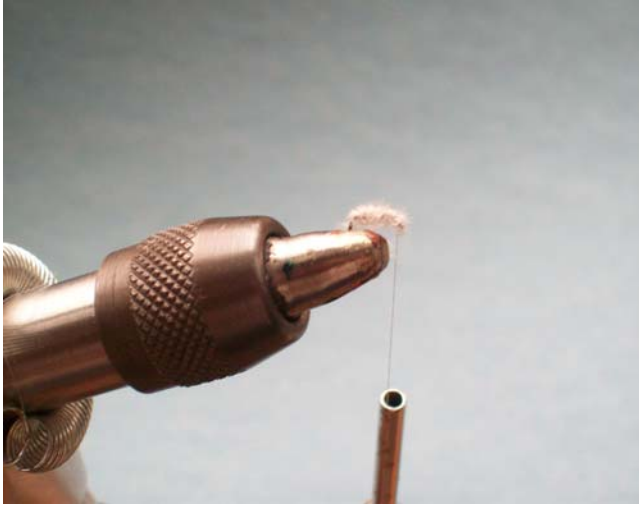
Morning dove small wing and inner wing feathers

Thread: 8/0 grey or white uni-thread

Head Cement



The Results



LITTLE YELLOW FLIES February 2009

By Steve Herring

It occurs to me that in the vast majority of time fishing in North Carolina, I end up going to pretty much the selection of flies. There's the Adams parachute, various attractors, caddis (never yellow) prince and pheasant-tail nymphs, and an occasional black or brown stone fly.

Several occurrences have set me to spending more time and interest in various "little yellow flies." Once, fishing the Green River, I noted a very few brilliant yellow # 12 duns on the surface. I presume that these were some sort of sulfur. They were yellow from head to tail and exceedingly beautiful. I had nothing in my fly boxes to imitate them.

Again, in Deep Creek, several times I have come across a decent hatch of yellow sallies. While little yellow mayflies would result in some takes, it was evident that the trout preferred some emerger form. Nothing in my vest seemed to satisfy that preference.

Then there was the time – while not a North Carolina experience – when my guide on the Snake River in Idaho discovered a pod of rising fish at the mouth of a side channel. He guessed they were feeding on PMD emergers. Between us we had two # 16 bi-color nymphs with yellow thorax and brown body. When we lost those to vigorous strikes, we had nothing else the fish would touch.

So began my quest for more imitative yellow flies that might lead to success in such situations. Here are a few of my finds.

On one of my journeys west, I discovered an extended body fly constructed of golden yellow deer hair. This was a real challenge for me to copy, being my second-ever attempt to build an extended body. This fly can be fished as an in-film dry or emerger.

Hook: standard #14-16 dry fly

Thread: 6/0 yellow

Body: dyed yellow deer hair, tied in behind the hook eye and folded back and folded back to form the head; body tied over stiff mon core

Tail: two or three deer hair fibers left slightly long; red ink on last segment of body

Underwing: sparse Krystal Flash

Wing: white CDC

This fly works for yellow sallies if the trout are not biting top water, and I believe would do for sulfurs (perhaps in a lighter yellow) and for western PMDs.

This next fly is also a copy of a fly shop find. It seems to work best for our hatches of smaller yellow sallies.

Hook: # 18 TMC RBL

Thread: 8/0 red, left uncovered at the butt end or one turn of red floss

Tail: sparse barred hackle fibers, light brown to cream

Body: PMD beaver dubbing or similar

Hackle: cream or pale yellow hen

Wings: white goose biots, trimmed to shape

Thorax: PMD dubbing

Antennae: mottled yellow turkey hackle

Last is a creation to prepare for the next time the guide has only one bi-color nymph for trout keyed on PMD emergers. The examples shown are tied with biot tails to try on yellow sallies, but I will tie up some with short hackle tails before returning to Idaho.

Hook: #14 – 16 Daiichi 1260 bead-head nymph or similar 2XL nymph hook; TMC 2312 will do

Thread: 6/0 yellow

Tail: brown goose biots or hackle fiber

Body: brown stretch tubing, small

Thorax: light yellow dubbing

Legs: mottled yellow hackle or soft hackle collar

Wing/wing bud: pale yellow CDC



Black Parachute March 2009

by Mike Dennis

Over my 30 years of fly fishing, I have come to believe the color black in a trout's diet is like dark chocolate is to me – irresistible. So several years ago, I created the Black Parachute and assumed this fly already existed, but after an exhaustive search through fly books I could not find this particular fly. The fly imitates ants, black midges, black mayflies and potentially other small black terrestrials. I have found it very useful when the fish are being selective particularly during warm weather in the summer. I make them in all sizes #16 - #22 depending on what is happening on the stream. I have taught 3 generations of fly tiers and my friend Bill Owen now ties the Black Parachute with an orange post. The post is not an imitation of a wing but strictly a visibility aid for the fisherman in a fly that is difficult to see (especially size #22). The post should be noted is slightly shorter than usual and is chopped at the top as opposed to the usual parachute. This is accomplished by clipping white calf's tail and using the dipped end as the top of the post.

Hook: Standard dry fly hook #16 - #22

Thread: 6/0 Black

Body: Dubbed black material

Tail: Black hackles (usually equal to the body length or less)

Post: Calf's hair (white or dyed orange)

Parachute: Black hackle appropriate length to the size of the fly.

I whip finish the knot but do not add head cement. There is a trick for keeping parachute hackles out of the way when finishing off the head knot requiring 2 – 3 hands and I will make this available to anyone who wishes to ask.



Whitlock's Near Nuff Sculpin April 2009

Jim Hoskinson



Hook: Dai-Riki #730 Size 6

Thread: 8/0 Olive

Bar-Bell with "Real Eyes"

Tail: Barred Schlappen Olive (wapsi)

Body: Grizzly Marabou Olive

Head: Olive Rabbitt Dubbing

Step 1: Pinch that Barb!

Step 2: Wrap the bar-bell onto the top of the hook in a figure eight style, tie off and add head cement or Zap-A-Gap. I usually do 3 or more while the glue dries.

Step 3: Add two strips of Barred Schlappen - one on each side then about 3 strips of pearl Krystal Flash.

Step 4: Wrap the body with Grizzly Marabou

Step 5: Wrap the head with Olive Dubbing